



Sentul Works / O2 Design Atelier + YTL Land & Development



Curated by Hana Abdel

Share

OFFICE BUILDINGS, RENOVATION, OFFICES INTERIORS · KUALA LUMPUR, MALAYSIA

Architects: [O2 Design Atelier](#), [YTL Land & Development](#)

Area: **40493** ft²

Year: **2021**

Photographs: [David Yeow](#)

Lead Architects: [Edric Choo Poo Liang in collaboration](#), [YTL Land Design Group](#)

[MORE SPECS](#)

Save





Recommended Products

WOODEN FLOORING



EGGER
EGGER Design Flooring for the House of Economy

FIBER CEMENTS / CEMENTS



Swisspearl
Swisspearl Largo Fiber Cement Panels

FIBER CEMENTS / CEMENTS

FIBER CEMENTS / CEMENTS



Home



Projects



Products

Folders



Feed



EQUITONE
Fiber Cement Facade Panel Natura

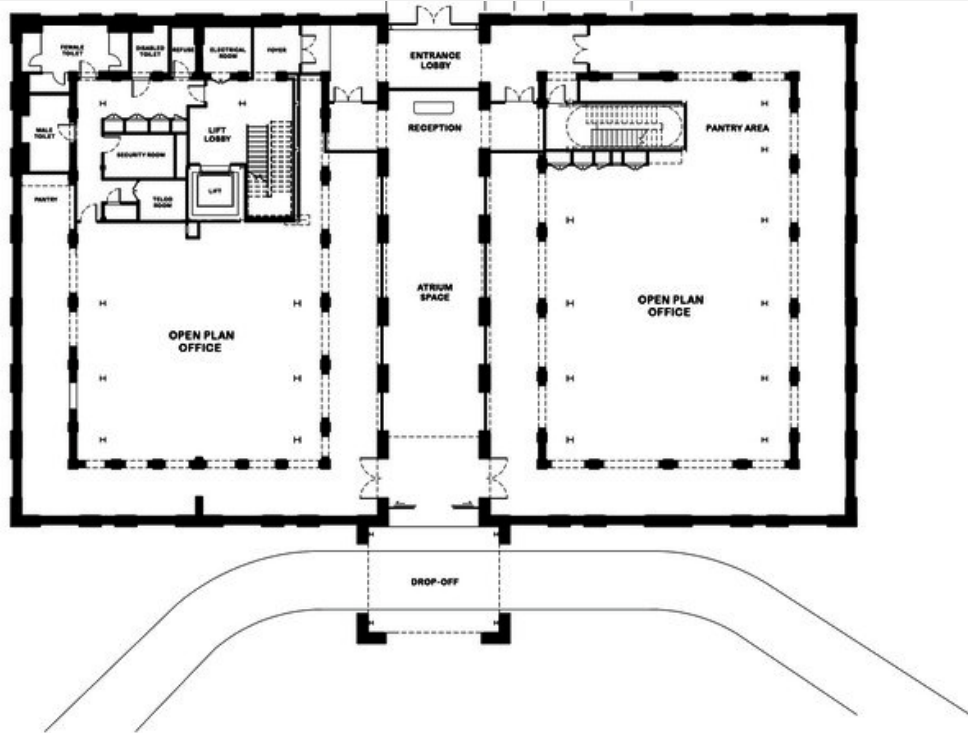


Rieder Group
Facade Panels - concrete skin


Text description provided by the architects. Sentul Works is nestled within the extended park setting of Sentul Park in Sentul West, [Kuala Lumpur](#), Malaysia where the Federated Malay States Railway (“FMSR”) rail complexes were established in 1904. This century-old colonial building was formerly the headquarters for the FMSR under British rule.



 Save



For years, this colonial building with its distinctive brick-and-concrete arched-colonnades façade stood prominently as a hollow shell amidst the leafy canopy of the park's big old trees until YTL Land Design Group spearheaded its restoration to create a unique atmosphere for a compatible new use as an office building. The brief to the architect was to ensure that building adaptations do not deviate materially

 Save

 Home

 Projects

 Products

Folders

 Feed



The original layout of Sentul Works consists of 2 main spaces separated by a central double-volume hallway. Adapting to the original symmetry of the building interior, the new free plan office spaces flanked around the original hallway now serve as a double-volume central atrium. A bridge on the first floor links the office floor plates on both sides. Visual connection is established between tenants of the ground and first floor within the working environment without compromise on privacy. The interior of the office is planned as a flexible free plan, giving tenants maximum adaptability according to their working needs.

 Save

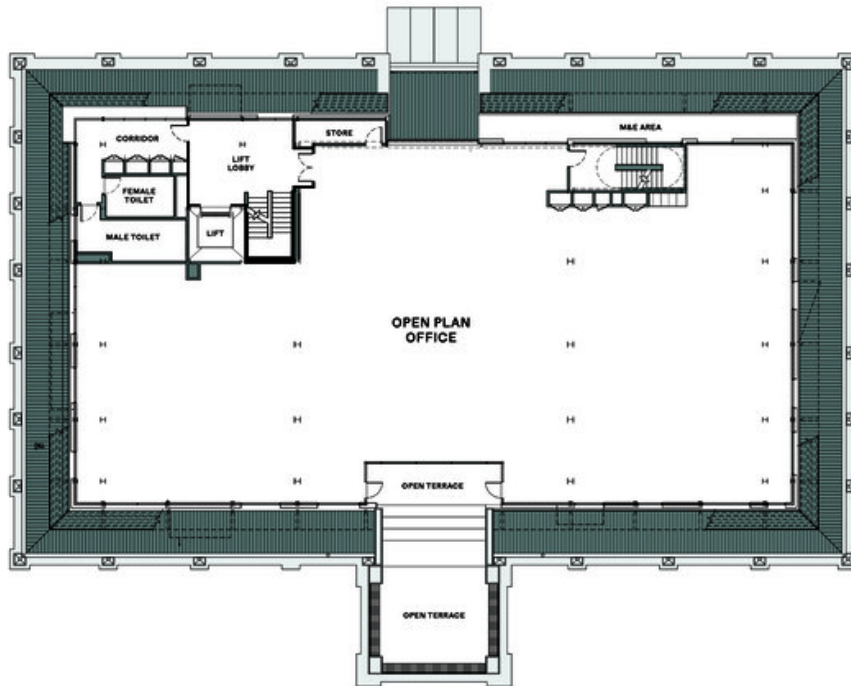

Home


Projects


Products

Folders


Feed



 Save


Home


Projects


Products

Folders


Feed



The new second and third floors form a new mass rising from the majestic colonial form at the base. Steel posts and beam structures supporting the new floor slabs lightly raised from the ground are well-integrated yet structurally independent from the colonial structure. This, at the same time, brought the architectural challenge of creating a relationship between old and new. The new mass is made recessed into the main colonial block below as a means to preserve the scale and presence of the old.

 Save



Corten steel which is used as the external building surface for the projected new mass above the existing building structure blends harmoniously with the exposed steel frame skeleton of the adjacent old railway workshops. The Corten cladding gives a modern cutting-edge outlook yet embodies a rich warm texture that resonates with the surrounding old rustic material palettes.

 Save


Home


Projects


Products

Folders


Feed



A central glass curtain wall breaks the homogeneity of the Corten-clad new mass. The façade break enhances the quality of modern abstraction and conformity to the domineering and symmetrical colonial architecture below. Office tenants are visually linked to the surrounding context by window openings on the new Corten-clad building skin. Tranquil greenery is brought into the office interior through thoughtfully carved-out window openings.



 Save

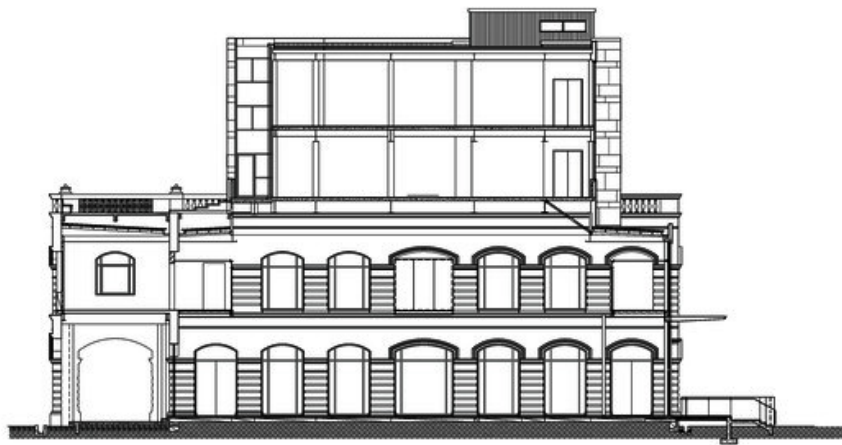
 Home

 Projects

 Products

Folders

 Feed



A number of balconies and bay windows are strategically added to some of the openings between the grid projecting towards the historical railway workshops to the north, the lush park setting to the west, the YTL Land sales gallery to the south-west and the iconic soaring towers of The Fennel by YTL Land to the east. The balconies and non-out windows create surprises and contribute to the overall abstraction of the

 Save


Home


Projects

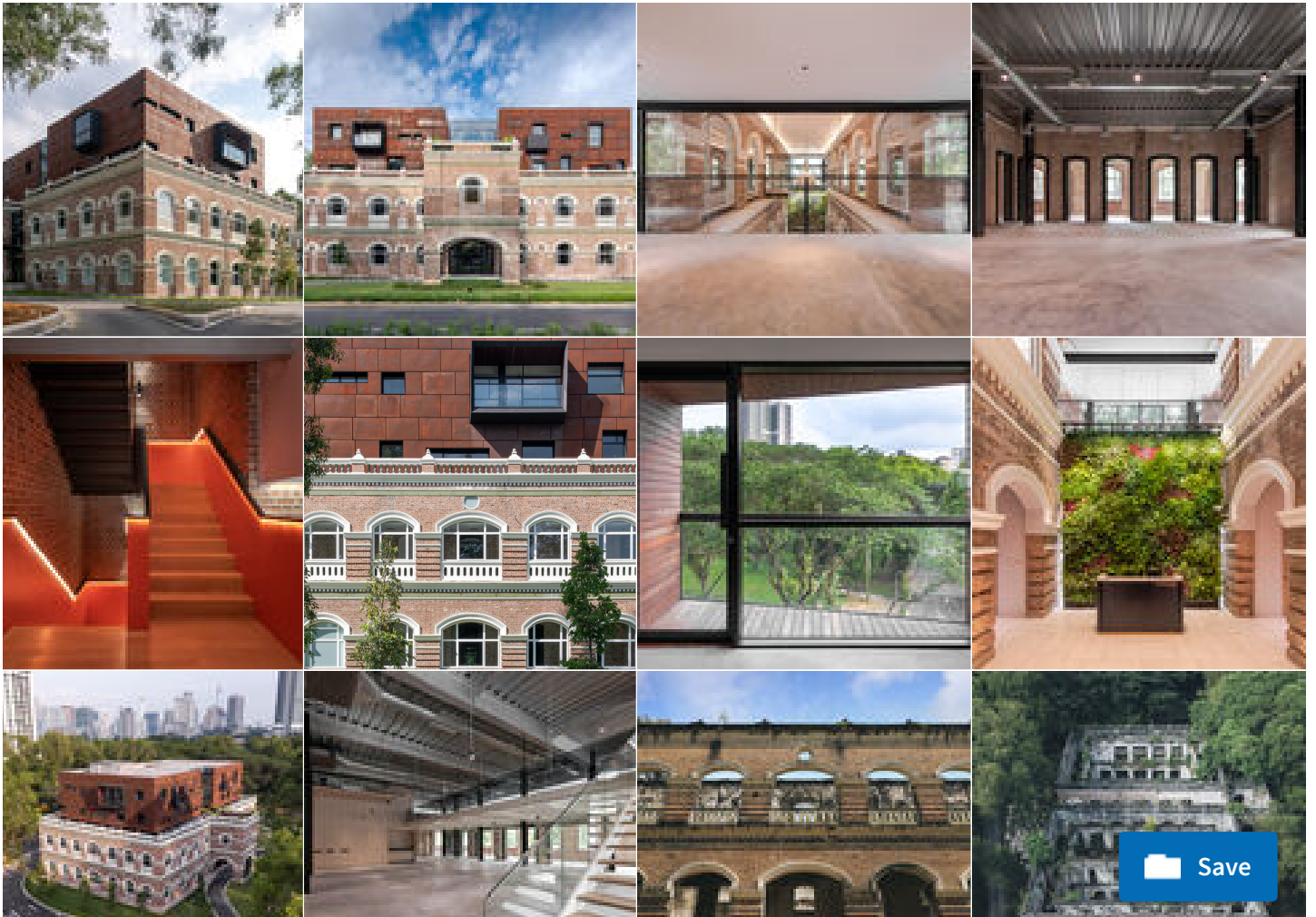

Products

Folders


Feed



Project gallery



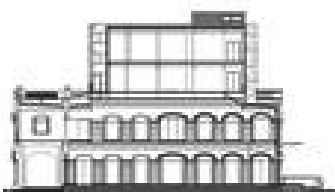
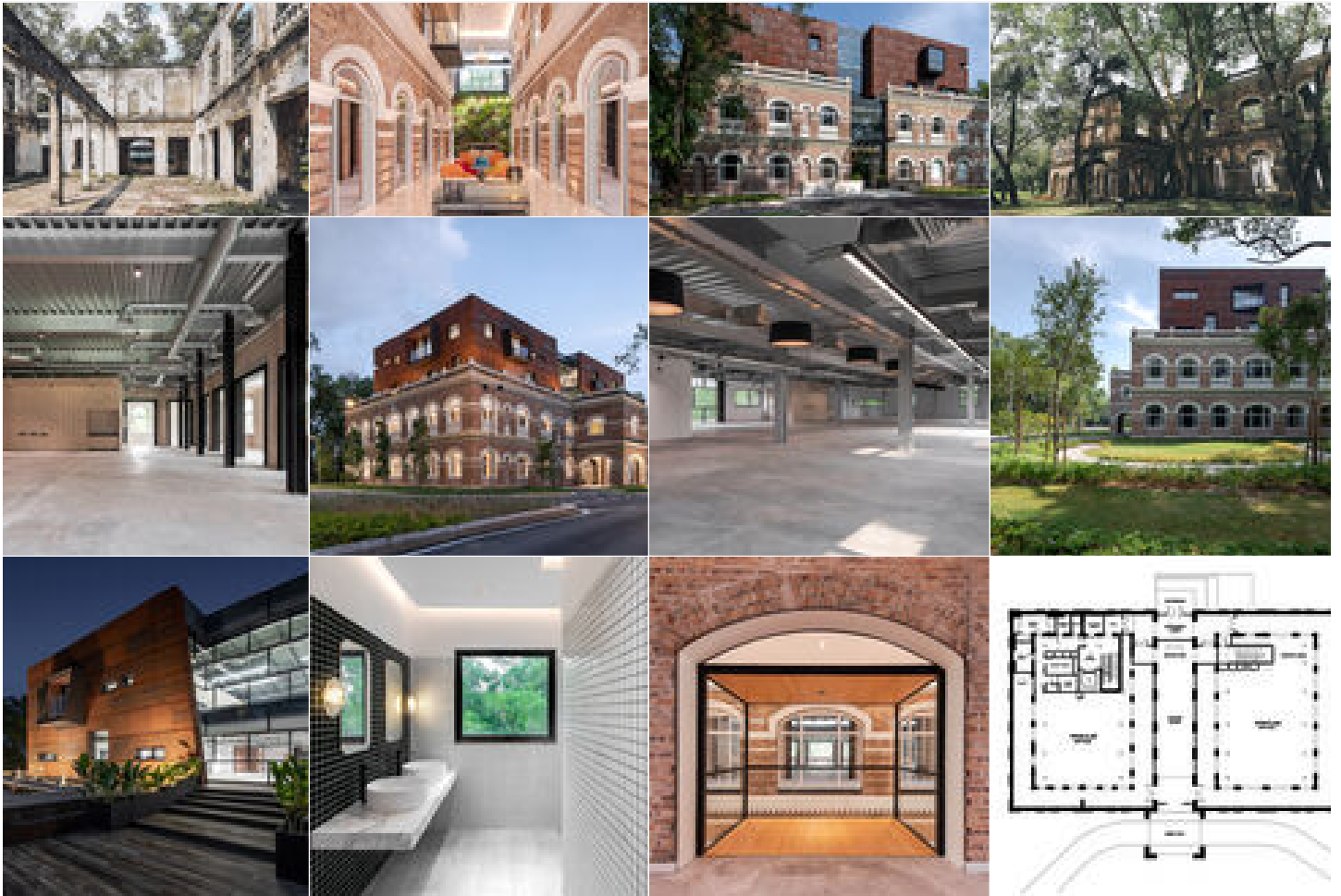
 Home

 Projects

 Products

Folders

 Feed



Project location

Address: Sentul West, F1100 Kuala Lumpur, Wilayah Persekutuan Kuala Lumpur, Malaysia



Home



Projects



Products


Folders



Feed



Location to be used only as a reference. It could indicate city/country but not exact address.

 Share

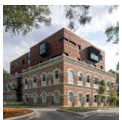
About this office



O2 Design Atelier

Office

[FOLLOW](#)



YTL Land & Development

Office

[FOLLOW](#)

PRODUCTS

- [Glass](#)
- [Concrete](#)
- [Brick](#)

#TAGS

- [Projects](#)
- [Built Projects](#)
- [Selected Projects](#)
- [Offices](#)
- [Office Buildings](#)
- [Refurbishment](#)

Published on September 06, 2021

 Save



Mitrex
Solar Roof



Aurubis
Patinated Copper:
Nordic...



AXOR
Bathroom
Collection - AXO...



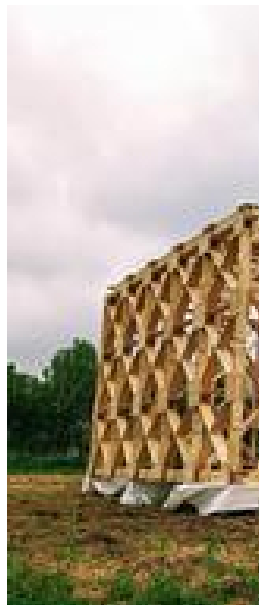
PENT Fitness
Fitness Equipment
- BANKA™ Weig...

STONES



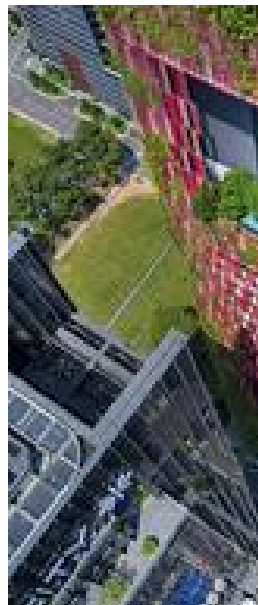
Cupa Pizarras
Slate-Clad Passive
House

HIDDEN JOINTS



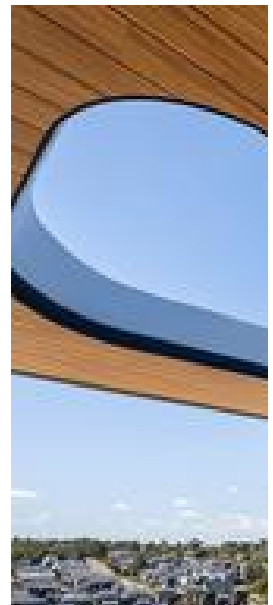
Fastmount®
Fastmount
Standard Range...

TILES / MOSAIC / GR...



AGROB BUCHTAL
Ceramic Tiles -
ChromaPlural

METAL PANELS

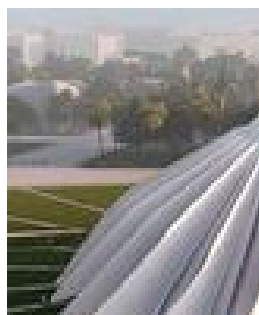


Sculptform
Aluminium Click-
on Cladding

ACOUSTIC



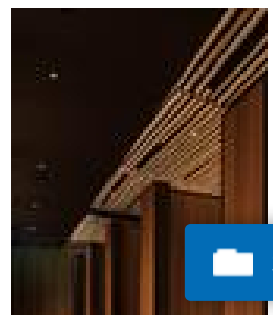
MEMBRANES



SOUND BOOTHS

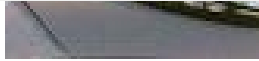


WOOD





FabriTRAK®
Acoustic Wall &
Ceiling System



Effisus
Façade Fire
Protection – A1...

Framery
Soundproof
Phone Booths -...



House of Bamboo
Bamboo Poles
Create Draped...

[More products](#)

 Save


Home


Projects


Products

Folders


Feed